



Your Wedding



NUTFIELD PRIORY
HOTEL & SPA
NUTFIELD, SURREY

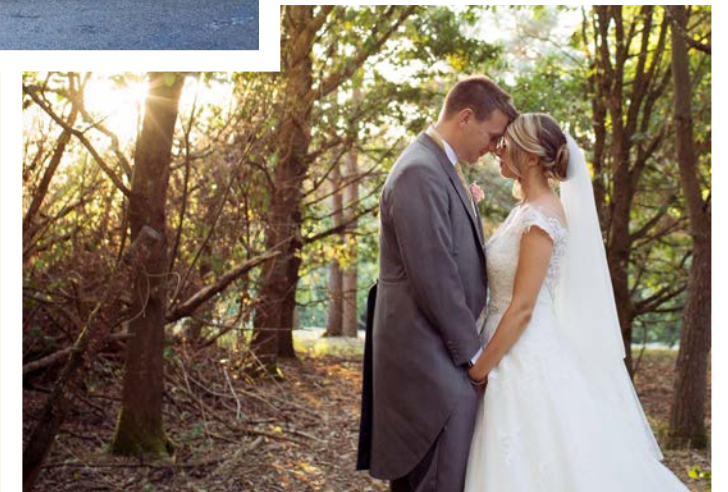


Creating magical memories

Let us set the scene for your wedding at Nutfield Priory, a magnificent Victorian mansion house, set high on Nutfield Ridge. Blend this with our unique contemporary style, modern British food and impeccable service, and you have the ultimate venue for your special day.



Whether it's a traditional day or you want to throw out the rule book completely, we will tailor a unique wedding day that truly reflects your personality.



Your ceremony and reception

Striking, elegant and full of character, each setting offers the perfect backdrop for your ceremony or wedding celebration.



The Gibson Room

The original Drawing Room of the house, this beautiful space features a strapwork ceiling, marble fireplace and walls panelled with polished rosewood and bird's-eye maple. Gold chandeliers and original pier mirrors provide glamour and sparkle, whilst the large bay window allows plenty of natural daylight and views over the valley below.

Civil ceremony - up to 80 guests
Wedding meal - up to 60 guests



The Library

This utopia for book lovers has built-in bookcases and a myriad of unique period features. With views across the countryside and direct access to the main hotel terrace, The Library is perfect for private reception drinks.





The Fielden Suite – Evening set up

As your day turns to night, we will transform this room into your own private venue. It has a private bar and outside terrace so you and your guests can celebrate in solitude. Plus, there is plenty of space for a dancefloor and entertainment.

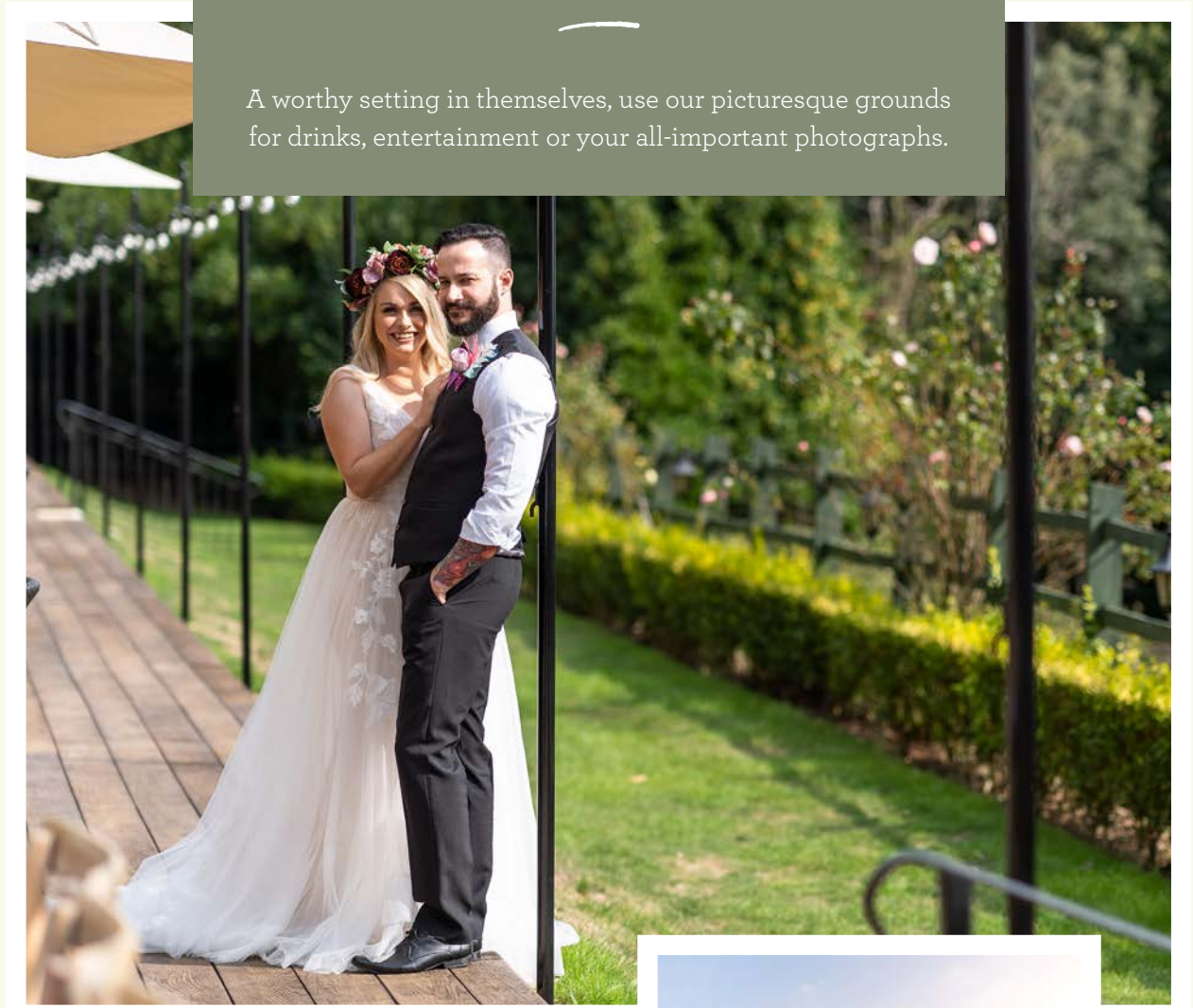
The Fielden Suite

The size of this room allows you to configure your ceremony layout however you choose. Large windows provide plenty of natural light and the neutral décor is perfectly suited for any theme. With a private bar, cloakroom and outdoor terrace, this is an exclusive space ideal for larger weddings. Doors to the private terrace allow guests easy access to the lawn, perfect for alfresco reception drinks and garden games.

- Civil ceremony - up to 100 guests
- Wedding meal - up to 100 guests
- Evening reception - up to 140 guests

Grounds and gardens

A worthy setting in themselves, use our picturesque grounds for drinks, entertainment or your all-important photographs.



Come outside

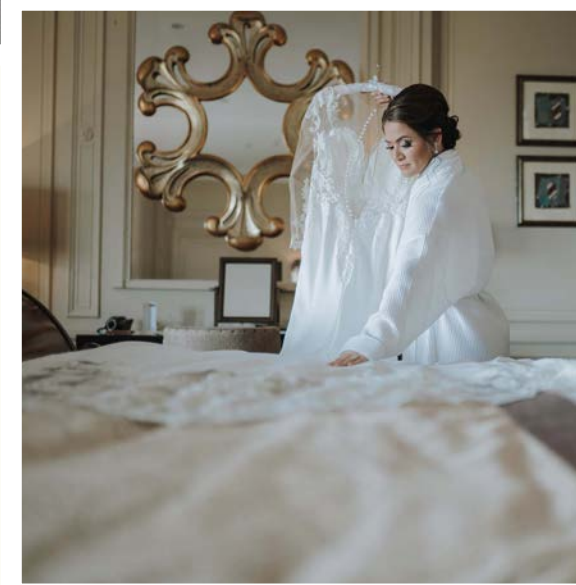
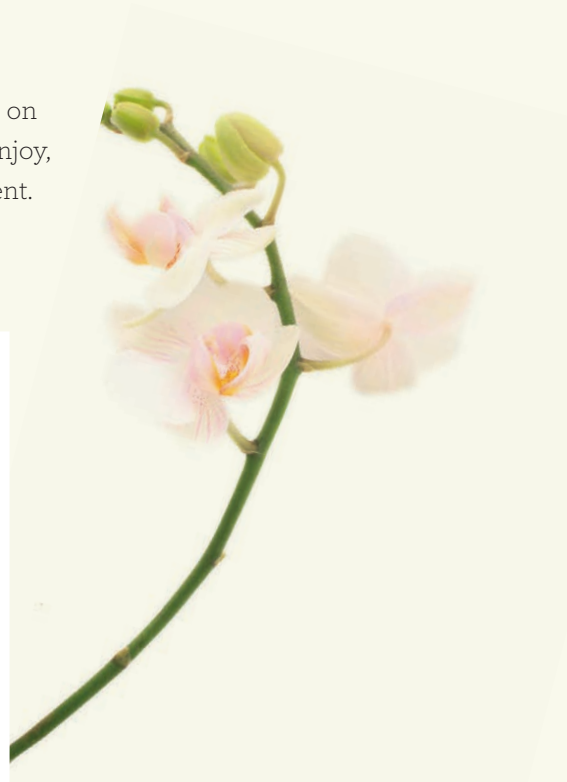
Perched upon Nutfield Ridge, this country house affords panoramic views of the Surrey countryside. Hold reception drinks in the sunshine on the grassy terrace area, just a few steps down from the main house.

Surrey is well known for its outstanding natural beauty and the 12 acres of private grounds that surround Nutfield Priory are testament to that. It's the perfect place to mingle with your guests - not to mention an idyllic spot for pictures.



Your venue, morning, noon and night

Whether you arrive the night before or on the big day, Nutfield Priory is yours to enjoy, complementing each and every moment.



Your wedding is more than just a day! In the run up to the main event, enjoy a sparkling afternoon tea, a spa day or reserve a stunning private dining room to host a welcome dinner.

Our stylish suites with period features are spacious and complete with a dressing table - a joy to get ready in and capture those exciting 'morning of the wedding' photographs.

The food and drink you love

Our kitchen team is passionate about seasonal food and showcasing the region's best produce. Our ultimate crowd-pleaser is the roast ribeye of Surrey beef, but we pride ourselves on our delicious vegan and vegetarian options too, sourcing fresh products from local farms wherever possible.



Let us design a specially crafted cocktail or themed bar that is unique to you, and as night falls, wow your guests with anything from sharing platters and interactive food stations to hog roasts and food trucks.

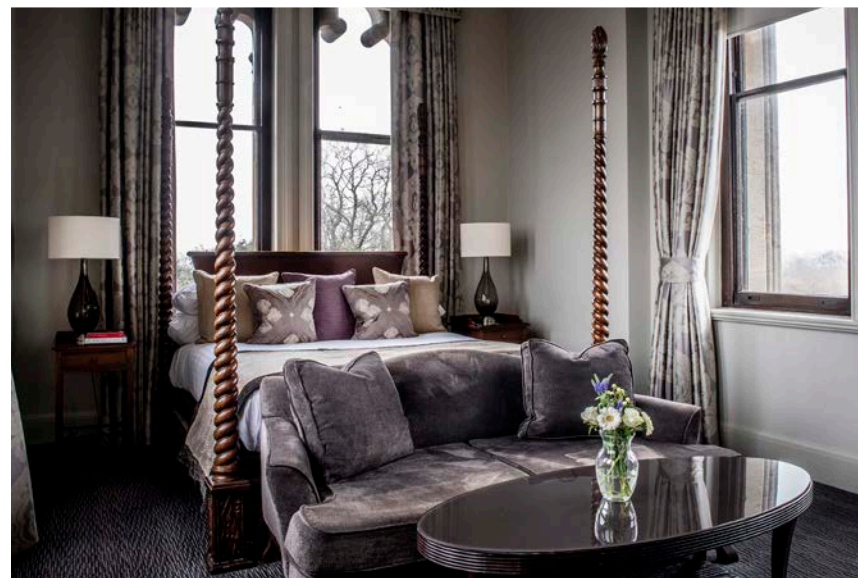


Rooms for you and your guests

Nutfield Priory has 60 stylish and contemporary bedrooms, including 15 beautifully appointed feature rooms as well as some bedrooms in the iconic tower.

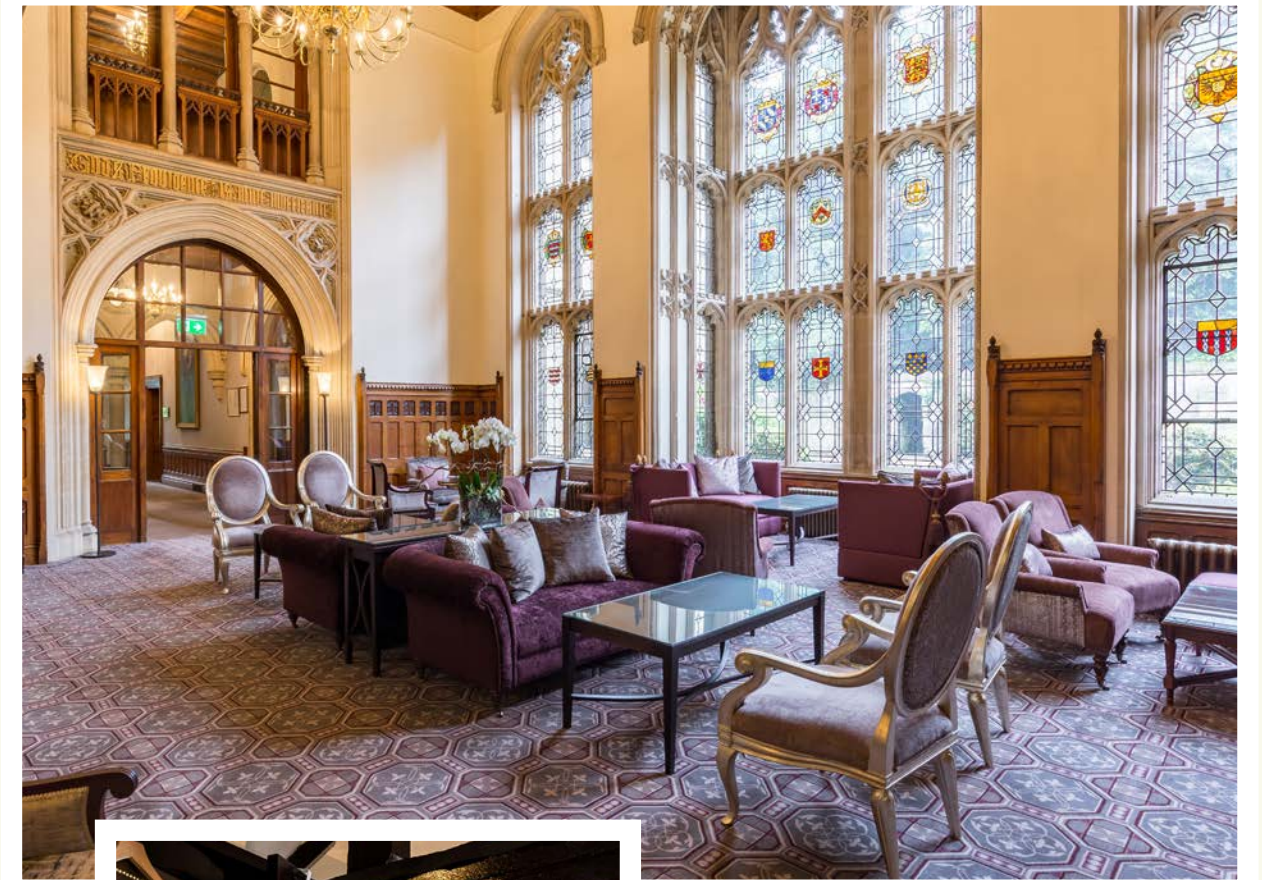
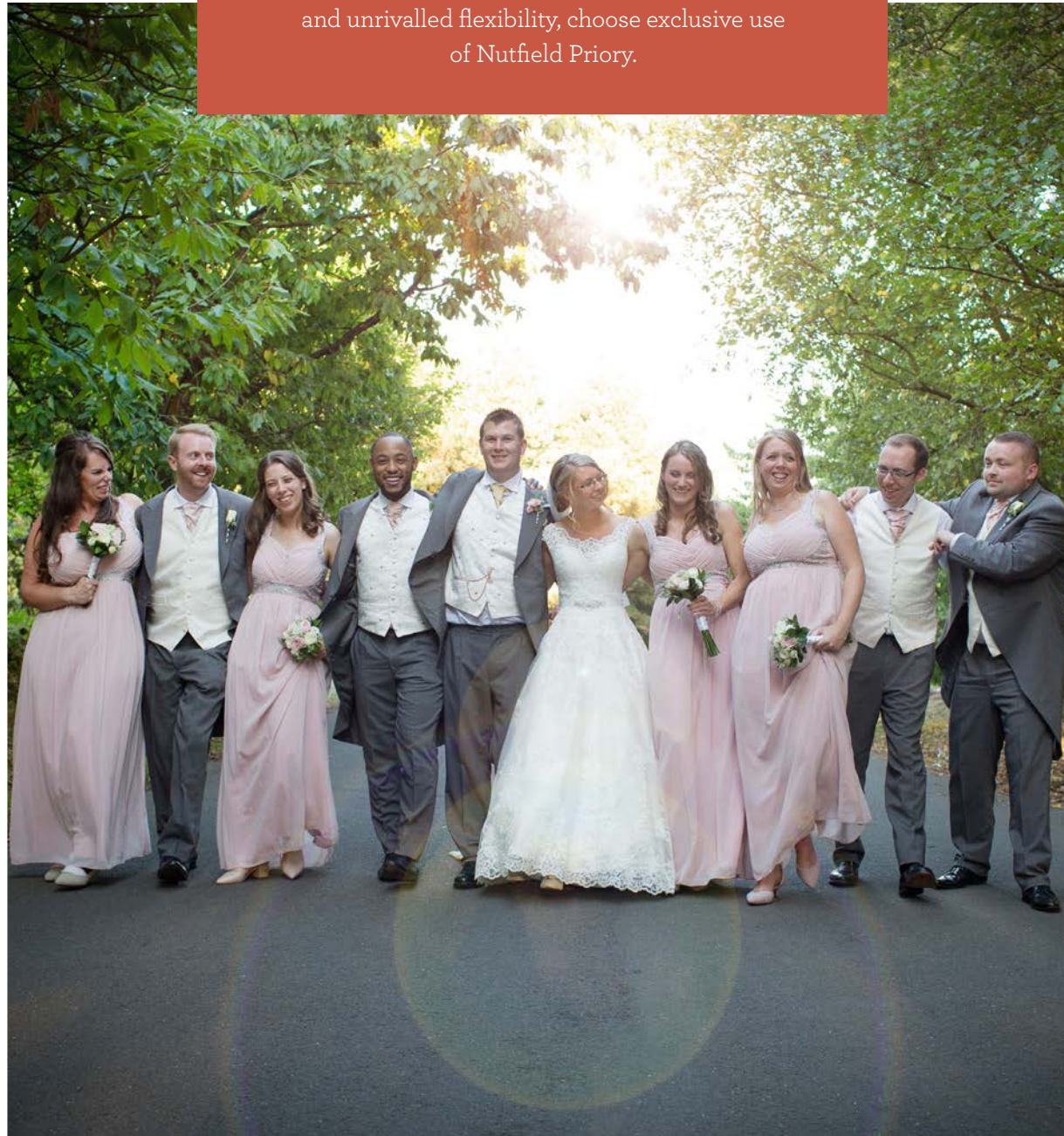
Each is individually decorated and many boast luxurious details and views across countryside and gardens.

To make your guests feel at home, we are delighted to offer preferential wedding accommodation rates for all of your guests, including those suitable for families, with a full traditional breakfast included.



Exclusively yours

Make our house your home. For a unique experience with the highest degree of privacy and unrivalled flexibility, choose exclusive use of Nutfield Priory.



With exclusive use, the venue is just for you. Relax and celebrate with only your nearest and dearest for company.



Nutfield Priory Hotel & Spa

Nutfield Road, Nutfield, Redhill, Surrey RH1 4EL

01737 824400

weddings.nutfield@handpicked.co.uk

Central Reservations

01642 706606

handpickedhotels.co.uk/nutfieldpriory

Photographic contribution from

Emma Russell

Kim Farinha Photography

Pebble Heaven Photography

Jeff Oliver Photography

Isha Hawkins Photography

The Fabulous Photography Group

Andrew Franklin Photography